



# E-Estate Palawan Development Corporation

## Agricultural Lots / Residential Developments



*Paramount views of the ocean*

CODE: AL067

STATUS: Titled

GPS: 10.3053, 119.3041

PRICE: PHP \_\_\_\_\_

MEASURE: 83,350 Square Meters

LOCATION: Malcampo, Roxas, Palawan

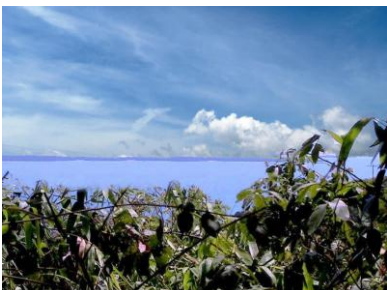
WEB: [www.palawanproperty.com/al067.htm](http://www.palawanproperty.com/al067.htm)



View of Stanlake Island



View of Stanlake Island



View of Green Island



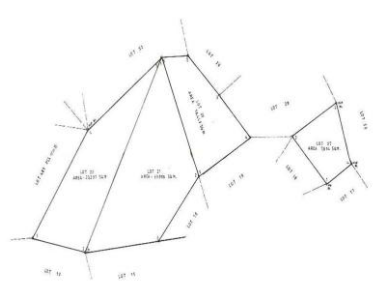
View of tropical forestation



View of natural bamboo



View of water source



View of the sketch map



View of satellite area map

### OVERVIEW:

This idealistic farm property is located at North of Palawan. The contour of land is partly flat and mostly rolling, planted with different fruit trees and non-fruit trees. There are many paramount views of several islands and the surrounding ocean along with tropical forestation. The property remains undeveloped with good potential to be one of the productive farm lands in Palawan.

### TRAVELLING:

The property can be reached for about 2 hour-drive by car from the city proper of Puerto Princesa. And from the national highway direct to the property will only take a 15-20 minute-walk.

### FACILITIES:

On the property Water supply is available and can be obtain from a deep well. Line of electricity is already available 300-350 meters ahead of the property.

### POTENTIALS:

The property is highly recommended for overlooking vacation farm houses. It is also has a considerable potential for a very productive farm development.



# E-ESTATE PALAWAN

591 P.E.O. Circle, Rizal Ave. Ext., Banca Banca, Puerto Princesa City, Palawan  
Tel: 48 4338501 / Fax: 48 4337792 / Mobile: +63 9209526835 / +63 9175485858  
E-mail: [sales@palawanproperty.com](mailto:sales@palawanproperty.com) / [palawanrealestate@yahoo.com](mailto:palawanrealestate@yahoo.com)